

## Welcome!

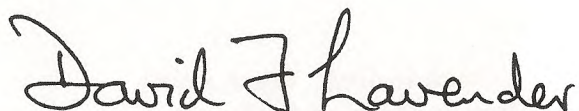
October 2011 marks the 110<sup>th</sup> Anniversary of the opening of the current church building. We have arranged a month of celebrations and we very much hope that you will be able to come and share some of these events and services with us. Whether you are coming for the first time, are able to come back having moved away from the area or continue your links with the church, we look forward to seeing you. You are all very welcome.

As we celebrate 110<sup>th</sup> Anniversary of the building we also celebrate all those people who have sustained Christian mission and a Methodist presence in our city centre through all these years.

Our 110<sup>th</sup> Anniversary is also an opportunity to renew our own Christian life. We shall do so by refocusing our energies on our worship, our discipleship and our care for each other. But even more we are asking afresh the question: what is God's vision for Methodism in Wolverhampton city centre for the 21<sup>st</sup> century?

So as we look back in thanksgiving we are also looking forward in hope to God's future. We look forward to seeing you.

Yours in Christ



Minister

## 110th Anniversary diary

### Sunday 25 September:

#### Harvest Festival

11.00 a.m. All Age Worship led by Rev David Lavender

6.00 p.m. Harvest Praise led by Rev David Lavender arranged with Peter Langford our organist

### Sunday 2 October

11.00 a.m. Service of Holy Communion led by Rev Kenneth Collins

6.00 p.m. Evening Worship led by Mrs Wendy Gould

### Sunday 9 October

11.00 a.m. Morning Worship led by the Local Preachers of Darlington Street.

6.00 p.m. Service of Holy Communion led by Rev David Lavender

### Sunday 16 October

11.00 a.m. Morning Worship led by the Sunday School

6.00 p.m. Songs of Praise a joint service with the Asian Christian Fellowship with items by the Wolverhampton Methodist Circuit Choir.

### Sunday 23 October

11.00 a.m. Morning Worship led by Rev Tony Kinch

6.00 p.m. Evening Worship led by Rev Tony Kinch

### Saturday 29 October 3.00 p.m. 110<sup>th</sup> Anniversary Service

Preacher: **Rev Dr Inderjit Bhogal**, A former minister in Wolverhampton and a Past President of the Methodist Conference led by: Rev David Lavender

Followed by a tea in the church hall

### Sunday 30 October

11.00 a.m. **Church Anniversary** led by **Rev Dr Inderjit Bhogal**

6.00 p.m. **Annual Memorial Service** led by Rev David Lavender

### Friday 4 November

7.30 p.m. Anniversary Concert  
Organist: **Jean Martyn**, recent finalist on *Britains Got Talent*  
Choir: Seventh Day Adventist Youth Choir

Tickets £7 (concessions £5)



## The history of the Church and Society

This year marks the 110th Anniversary of the current Darlington Street Methodist Church. Its green dome is a very well known landmark and is visible from many parts of Wolverhampton. Its style has been described as "Edwardian Baroque". But Methodism in Wolverhampton goes back much further than 1901.

Early Methodist meetings in Wolverhampton were held in a room behind the Noah's Ark Inn. In 1787 a new chapel was built in Wheeler's Fold and was opened by John Wesley. In 1824 the foundation stone of a new and bigger chapel was laid on this site in the then newly created Darlington Street. It was opened on the 26th

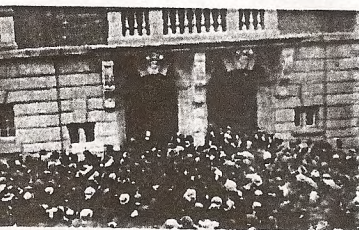
and 28th August 1825.

In 1857 the then Mayor, John Hartley, gave an adjoining site in School Street, on which were built a Sunday School and a Day School. At the end of the century

it was decided to replace the pews but it was then found that the whole building needed so much renovation that it

was better to demolish and start again. The old chapel was closed on 28th August 1899 and the congregation met in the Agricultural Hall.

The new church was opened by Miss Jenks on 29th October 1901. It is a large and imposing structure, reflecting the general trend in nonconformist churches to upgrade from small chapels to buildings on a par with Anglican churches.



### An Anniversary Prayer

Generous God, Creator of all that is,  
You give meaning and purpose to all creation.

We praise you that you reveal your love in the living, dying and rising of your Son Jesus Christ: in him you give us life and hope.

We thank you for the 110 years of this church building and for the faithful witness and dedicated service of so many people through the years.

As we look back in thanksgiving so we look forward in faith and pray that you will:

Renew our vision  
Inspire our worship  
Deepen our discipleship and  
Help us to care for each other, our community, our city and your world for the sake of your kingdom. Amen

### Sunday Services

- |            |  |
|------------|--|
| 11.00 a.m. | Morning Worship<br>(Holy Communion<br>first Sunday)  |
| 11.00 a.m. | Sunday School  |
| 6.00 p.m.  | Evening Worship<br>(Holy Communion<br>second Sunday) |

**You are welcome to come  
and join us**

Darlington Street Methodist Office  
(9.30 a.m. — 1.30 p.m. Monday to Friday)  
24, School Street, Wolverhampton WV1 4LF  
Telephone 01902 422100  
Administrator: [karenggray@methodist.fsnet.co.uk](mailto:karenggray@methodist.fsnet.co.uk)  
Minister: [david.lavender@methodist.org.uk](mailto:david.lavender@methodist.org.uk)



**Darlington Street  
Methodist Church**

**110th  
Church Anniversary  
Celebrations**

**October 2011**

**The Methodist Church** 

**Open to God Open to life  
Open to the world Open to you**